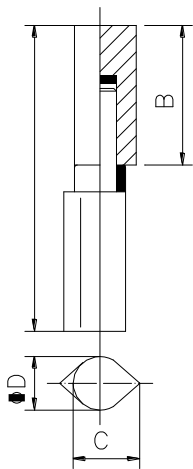




Панта Estebro® за заваряване капковидна с лагер 23x180 мм, 726



Cod	Dimens.	A	B	ØD	C		
720	AX 14x80	78	37	14	17	15	1,50
721	AX 16x80	78	35	16	20	15	2,00
722	AX 16x100	98	45	16	20	15	2,35
723	AX 20x120	118	55	20	25	10	3,15
724	AX 20x150	148	70	20	25	8	3,20
725	AX 23x150	148	71	23	29	6	3,20
726	AX 23x180	178	86	23	29	5	3,20

Family: SS drop profile hinge

Material: Stainless steel AISI 316

Maximum weight supported: According to study

Description: Mechanized component very resistant to the corrosion which is installed on a swing door to allow its opening and closing. Its drop profile shape facilitates the welding. The axial bearing installed between both bodies softens the maneuver turn.

All hinges from Ø20 mm on come with grease hole.

Продукт: [Панта Estebro® за заваряване капковидна с лагер 23x180 мм, 726](#)

Категория: [Панти за заваряване](#)

Бранд: [Estebro®](#)

Категория бранд: [Панта Estebro®](#)